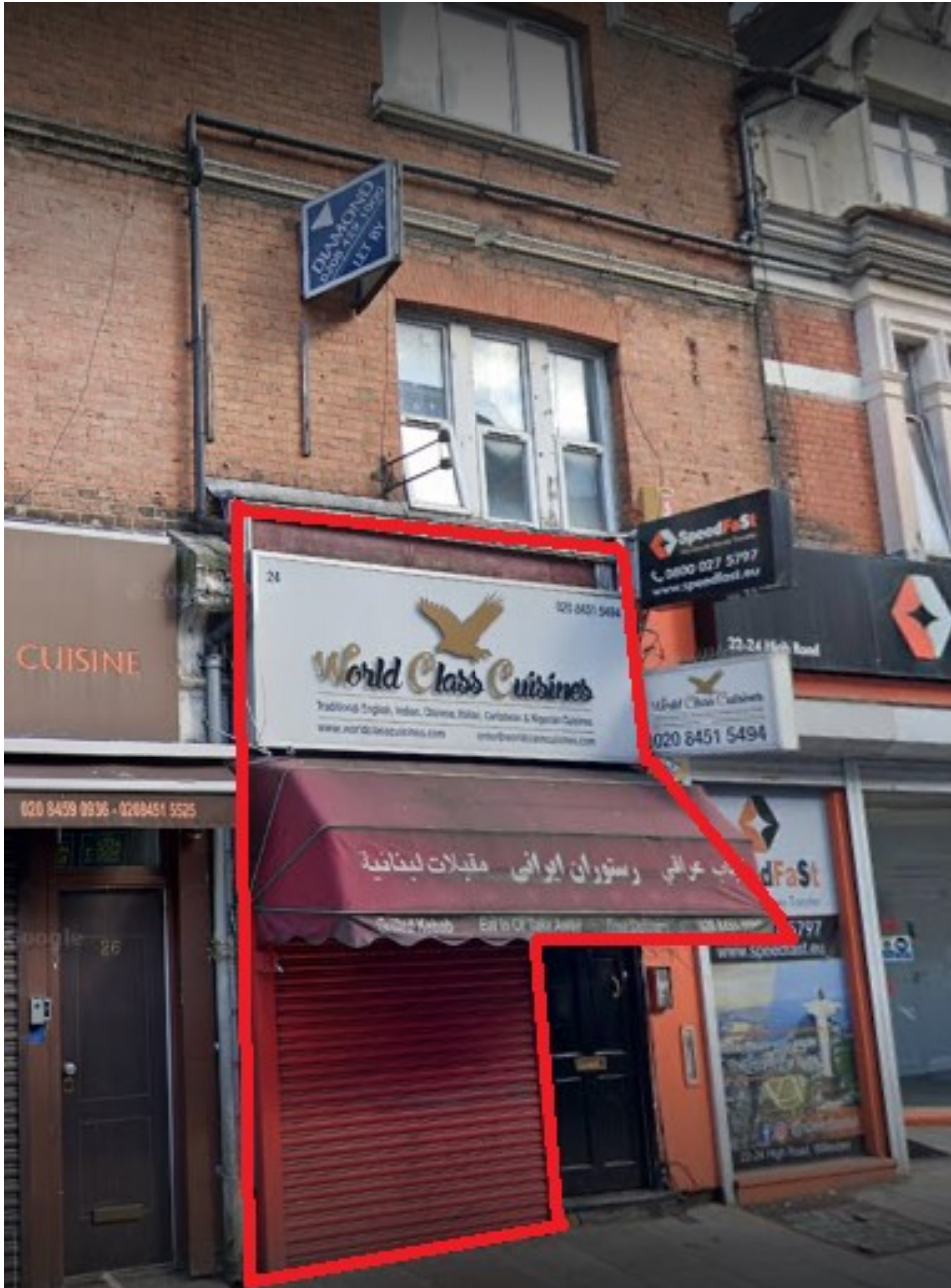


SHOP – 22 Willesden High Road London

£20,000 pcm



Full Description

LOCATION, This ground and first floor unit with A3 restaurant consent is located in a busy part of the High Road, only minutes from Willesden Green Station., The restaurant is in the heart of a densely populated commercial and residential area opposite Sainsbury's supermarket with free parking for up to 2 hours., , **DESCRIPTION**, The property is arranged over ground floor and first floor, benefits from extraction., The property is available now., , **FLOOR AREAS**, Set out below are the approximate gross internal areas;

Ground Floor: 903 sq ft 84 sq m, First Floor: 229 sq ft 21 sq m, Total 1,132 sq ft 105 sq m, , BUSINESS RATES, We have been advised by the London Borough of Brent that the rateable value from 1 April 2017 is £22,750.00. Prospective tenants are advised to confirm this information by telephoning the local council on ., , TENURE, New Lease available, , RENT, £20,000.00 per annum.

Contact Us

Adilsons Properties Ltd

